

SERVICES LEGEND

DESCRIPTION	SYMBOLS	
	PROPOSED	EXISTING
PROPERTY LINE	---	---
RIGHT-OF-WAY	---	---
EDGE OF ASPHALT	---	---
CURB	---	---
STORM SEWER	---	Ex. 250 STM
CULVERT	---	---
CATCH BASIN	---	---
LAWN DRAIN	---	---
LAWN DRAIN RIM EL.	(LB 213.00)	---
INFILTRATION TRENCH	---	---
DITCH	---	---
DETENTION/CLEANSING POND	---	---
STREET LIGHT	---	---
PHASING BOUNDARY	---	---
CHAINLINK FENCE	---	---

LEGAL DESCRIPTION

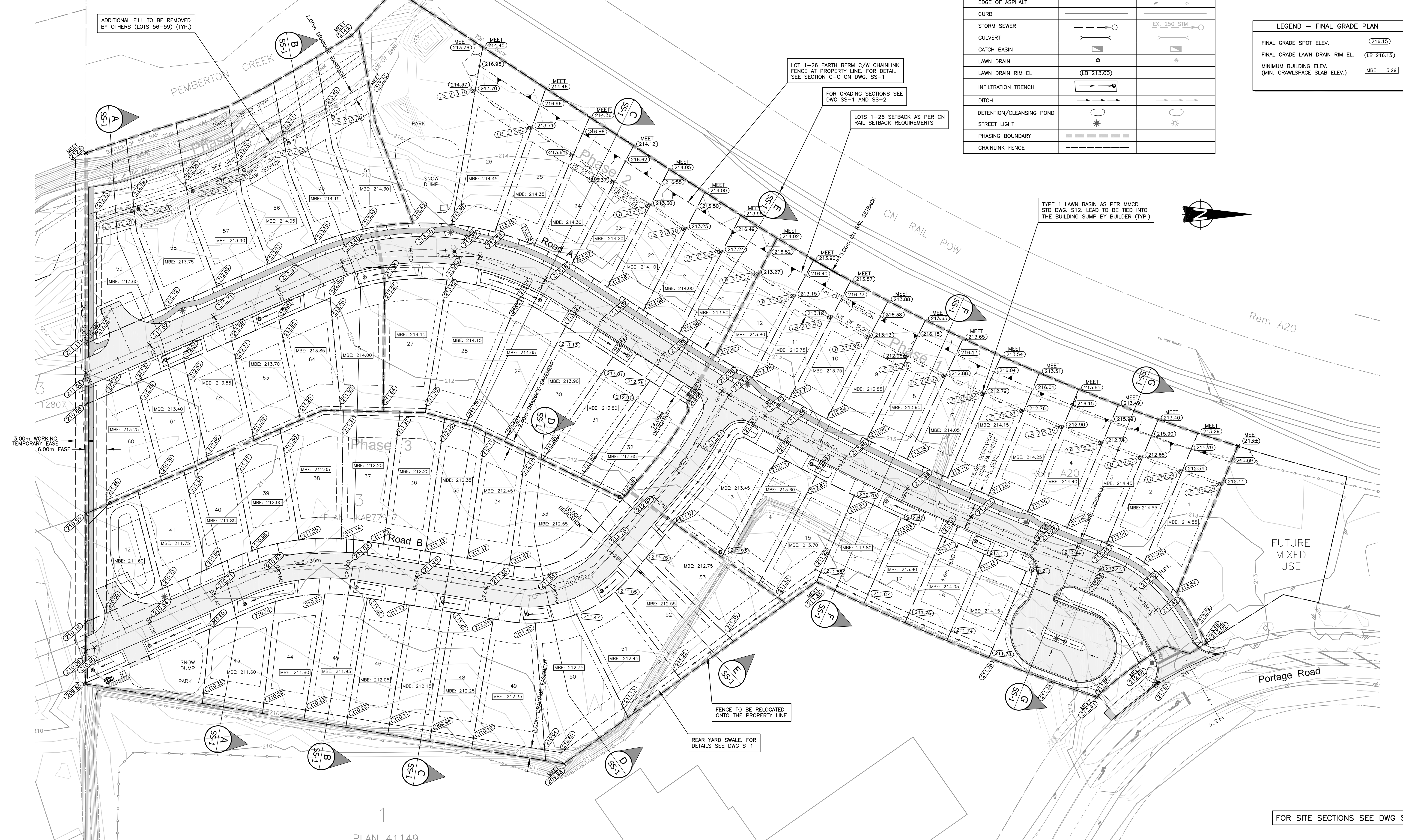
LOT 3, PLAN KAP77917 & LOT 3, PLAN 12807, BOTH OF DL 203, LILLOOET DISTRICT

BENCH MARK CONTROL

ELEVATIONS ARE ORTHOMETRIC AND ARE DERIVED FROM GPS OBSERVATIONS CONVERTED TO CGVD28 ELEVATIONS USING THE HT2.0 GEOID MODEL

LEGEND - FINAL GRADE PLAN

FINAL GRADE SPOT ELEV.	(216.15)
FINAL GRADE LAWN DRAIN RIM EL.	(LB 216.15)
MINIMUM BUILDING ELEV. (MIN. CRAWLSPACE SLAB ELEV.)	MBE = 3.29



FOR SITE SECTIONS SEE DWG SS-1 & SS-2

PI AN 41149

P:\300\0359-Tyasa Pemberton\DESIGN - DETAILED DESIGN\GRADING PLAN.dwg, 5/2/2016 1:18:09 PM, TT

client TIYATA DEVELOPMENTS INC.		project TIYATA VILLAGE PEMBERTON, BRITISH COLUMBIA		PROFESSIONAL ENGINEERS WEBSTER ENGINEERING LTD LAND DEVELOPMENT CONSULTANTS 3745 DELBROOK AVENUE, NORTH VANCOUVER, B.C. V7N 3Z4 983-0458		COPYRIGHT RESERVED. THIS DRAWING AND DESIGN ARE AND AT ALL TIMES REMAIN THE EXCLUSIVE PROPERTY OF WEBSTER ENGINEERING LTD. AND CANNOT BE USED, REPRODUCED OR DISTRIBUTED WITHOUT WRITTEN CONSENT. © 2016 WEBSTER ENGINEERING LTD.		approved designed by H.K.G. drawn by M.J.F. checked by J.A.T. date NOV.02.15		scales hor: 1:500 vert: -	
2 MAY.03.16 REVISD PER VOP COMMENTS PFB		1 APR.08.16 DETAILED DESIGN SUBMISSION HKG						drawing no. 3439 rev. 4		GRADING PLAN GR-1 2	