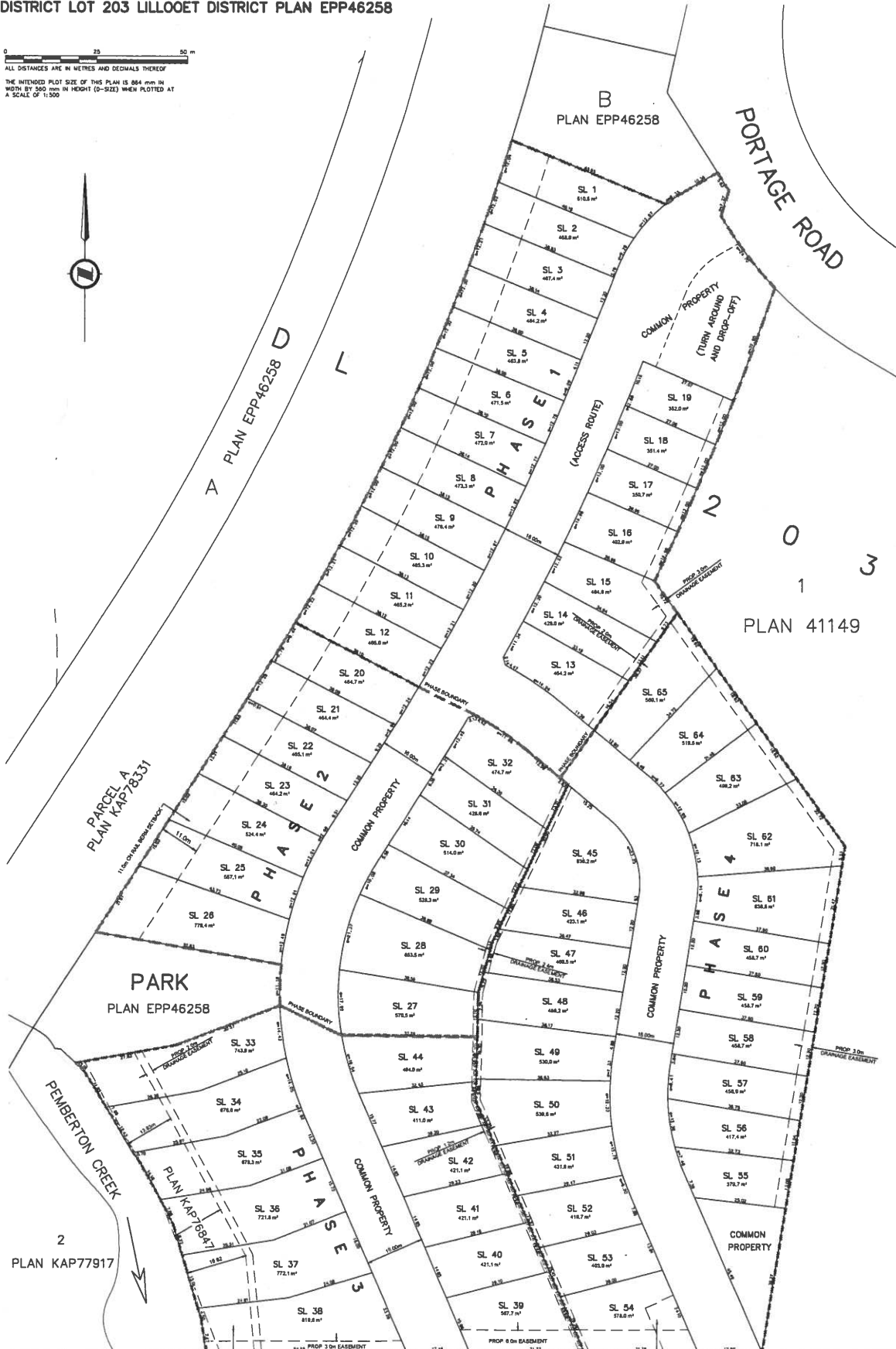


Exhibit "A"

Proposed Strata Plan for the Development Amended November 28, 2018

SKETCH PLAN TO ACCOMPANY FORM P FOR PHASED
 BARE LAND STRATA DEVELOPMENT OF LOT C
 DISTRICT LOT 203 LILLOOET DISTRICT PLAN EPP46258

0 25 50 m
 ALL DISTANCES ARE IN METRES AND DECIMALS THEREOF
 THE INTENDED PLOT SIZE OF THIS PLAN IS 884 mm IN
 WIDTH BY 500 mm IN HEIGHT (D-SIZE) WHEN PLOTTED AT
 A SCALE OF 1:500



McElhanney
 McElhanney Associates
 Land Surveying Ltd.
 Suite 203
 1025 Millar Creek Road
 Whistler BC
 Canada V0N 1B1
 Tel: 804 932 5428

OUR FILE NO. 2113-02928-00
 OUR DRAWING NO. 02928-00-W-D-FORM-P-RS.DWG

THIS PLAN LIES WITHIN THE SQUAMISH LILLOOET REGIONAL DISTRICT.